

# MINITOP RUBBER TRACKS

## Safety, Use and Maintenance sheet

### SAFE USE:

1. Always use appropriate PPE, such as safety glasses, gloves and safety footwear during the installation process
2. Avoid contact with moving undercarriage parts to prevent injury
3. Carry out the track replacement process on a level surface
4. Avoid lifting excessively heavy loads and, when possible, use suitable lifting equipment (hoist, winch, forklift, etc.)
5. In any case, refer to the instructions of the original manufacturer of the machine on which you are working

### Removing the old track

1. Place the bucket and front blade of the excavator on the ground and lower them simultaneously to raise the whole machine off the ground by about 20cm
2. Use jackstands or blocks to further stabilise the machine
3. Loosen the track tensioning mechanism by opening the grease valve located in the frame behind the protective cover (fig. 1) and retract the idler wheel (fig. 2.) by applying pressure to the track (using a lever). The track should be completely loose (fig. 3)
4. Remove the track from the undercarriage, possibly with the help of the pry bar by levering the idler wheel (fig. 4) or a lifting tool
5. Carry out a general cleaning and inspection to check the wear condition of the undercarriage parts and any play on the idler and drive wheels

### CORRECT MAINTENANCE

1. Check track tension periodically: Check after 30h of work and then every 50h. Refer to the picture beside and the manufacturer's specifications.
2. Track inspection: Check the condition of all undercarriage and track elements after each work session for excessive wear of any element.
3. Be sure to wash the tracks and wagon to remove debris, mud, gravel or chemicals such as oils, fuel, solvents, salt, etc. that could prematurely damage the rubber.

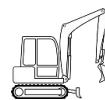
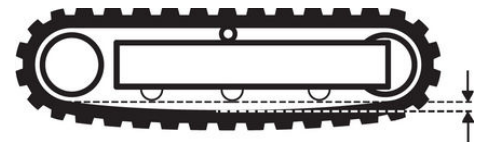


### USEFUL TOOLS:

1. Crowbar
2. Socket spanner
3. Grease pump
4. Jackstands / wooden blocks
5. PPEs (safety glasses, gloves, safety footwear)

### Installation of the new track

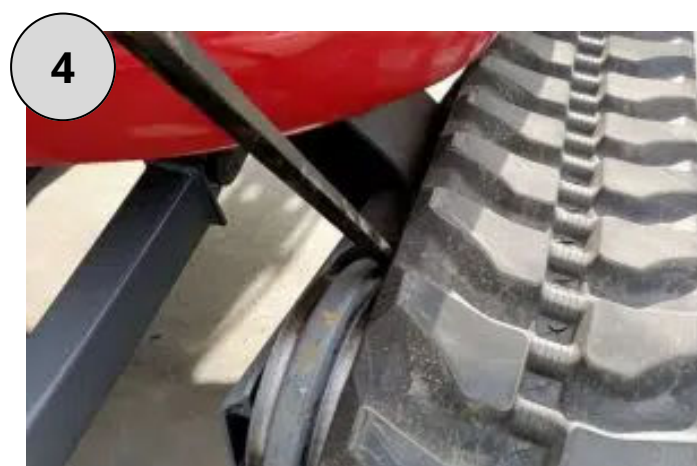
1. Place the new track on the drive wheel, idler wheel and around the undercarriage rollers with the help of any necessary lifting tools
2. Ensure that the drive wheel teeth are properly engaged with the track links and that the track guide is aligned with the idler wheel
3. Operate the track tensioning mechanism with the grease pump and ensure that the track reaches the correct tension (see fig. below) by measuring the distance between the contact surface of the centre roller and the track guide (however, refer to the original machine manufacturer's specifications)
4. Advance the track and ensure that it rotates around the carriage without unexpected jerks or vibrations. In this case, recheck the alignment of the drive wheel teeth and the rest of the undercarriage components with the track guide and repeat the necessary steps.



Machine < 2.5t	15 mm
Machine between 2.5t e 5.5t	25 mm
Machine >5.5t	35 mm



Machine < 3,5t	25 mm
Machine > 3,5t	45 mm



**For further information please do not hesitate to contact us!**



[Info@minitop.it](mailto:Info@minitop.it)



+39 0121 349156